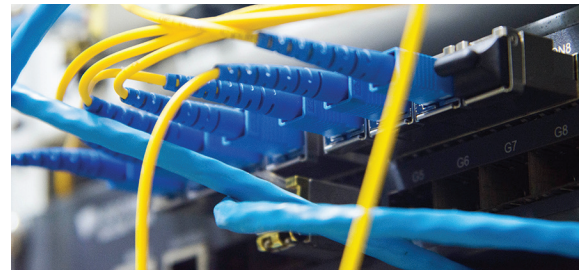


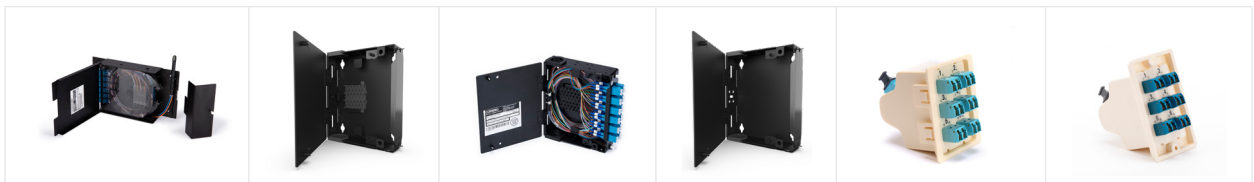
CORNING

Take fiber to the edge

with Corning's small-space solutions

As fiber moves right to the edge, tight spaces and customers' aesthetic considerations are driving the need for ever smaller devices. From housings to wall-plate outlets, Corning has the compact, high-quality hardware you need to get the job done right.





Specification	Single Cassette Housing	Single Panel Housing (SPH)	Pigtailed SPH	Single Module Housing	Floor Box Module	Wall Gang Module
Dimensions (H x W x D)	6.63 x 12.5 x 2.63 in (16.84 x 31.75 x 6.68 cm)	6.3 x 5.5 x 2.0 in (16 x 14 x 5 cm)	6.3 x 5.5 x 2.0 in (16 x 14 x 5 cm)	6.3 x 5.5 x 2.0 in (16 x 14 x 5 cm)	3.125 x 2.44 x 3.56 in (7.94 x 6.2 x 9.04 cm)	3.125 x 2.44 x 3.56 in (7.94 x 6.2 x 9.04 cm)
Maximum Fiber Count	24	24	24	24	12	12
Connector Type	LC, SC, ST®	LC, SC, ST	LC, SC, ST	LC, SC	LC	LC
Field Terminated	✓	✓	✓			
Preterminated				✓	✓	✓
Stocked at Distribution		✓	✓			
Surface Mount	✓	✓	✓	✓		
DIN Rail Capable		✓	✓	✓		
Copper (CATx) and Fiber		✓	✓	✓		
Cable Strain-Relief	✓	✓	✓	✓		
Loose Tube Compatible	✓	✓	✓			
Tight Buffer Compatible	✓	✓	✓			
Ribbon Compatible	✓	✓	✓			
Application	Single Cassette Housing	Single Panel Housing	Pigtailed SPH	Single Module Housing	Floor Box Module	Wall Gang Module
Box-in-Box (Ideal for NEMA or IP-Rated Enclosures)	✓	✓	✓	✓		
Space Constrained	✓	✓	✓	✓		
Fiber to the Desk	✓	✓	✓	✓	✓	✓
Utilities				✓		
Casino (Fiber to the Slot)						
Walker Ducts						
Ticketing Area for Transit Authority						
Department of Transportation		✓	✓			
Ordering Information	SCH-01C Wall-mountable, holds 1 closet connector housing (CCH) splice cassette, black	SPH-01P Wall-mountable, holds 1 CCH connector panel, black	SPH-CS12-A9-P00RE 12 F LC duplex, single-mode (OS2), single fiber, 250 μm SPH-CS24-A9-P00RE 24 F LC duplex, single-mode (OS2), single fiber, 250 μm SPH-CS12-A9-P00RE 12 F, LC UPC, SM, LT SPH-CS24-A9-P00RE 24 F, LC UPC, SM, LT	SMH-01M Wall-mountable, holds 1 reduced-depth Plug & Play™ module, black	MAM-UM12-05R-93RQ-F Floor box, 12 F, OM4, red	MAM-UM12-04V-89VG-J Wall box, 12 F, OS2, violet



Specification	EDGE8® Single-Module Housing	EDGE™ Single-Module Housing	EDGE Single-Module Splice Housing	WLL*	WMO*	Surface-Mount Box*	Panel Mounting Bracket
Dimensions (H x W x D)	1.125 x 3.5 x 6 in (2.86 x 8.89 x 15.24 cm)	1.125 x 4.5 x 6 in (2.86 x 11.43 x 15.24 cm)	1.125 x 4.5 x 8.5 in (2.86 x 11.43 x 21.59 cm)	4.5 x 2.75 x 0.19 in (11.43 x 6.99 x 0.46 cm)	5.7 x 5.7 x 1.6 in (14.4 x 14.4 x 4.06 cm)	Varies†	6.44 x 2.85 x 1.99 in (16.5 x 7.3 x 5.1 cm)
Maximum Fiber Count	8	12	12	6/12	20	6	48
Connector Type	LC	LC	LC	LC, SC, ST®	LC, SC, ST	SC	N/A
Field Terminated			✓	✓	✓	✓	N/A
Preterminated	✓	✓	✓				N/A
Stocked at Distribution							
Surface Mount	✓	✓	✓	✓	✓	✓	✓
DIN Rail Capable							
Copper (CATx) and Fiber				✓	✓	✓	N/A
Cable Strain-Relief			✓				N/A
Loose Tube Compatible			✓	✓	✓		N/A
Tight Buffer Compatible				✓	✓	✓	N/A
Ribbon Compatible			✓				N/A
Application	EDGE8 Single Module Housing	EDGE Single Module Housing	EDGE Single Module Splice Housing	WLL	WMO	Surface-Mount Box	Panel Mounting Bracket
Box-in-Box (Ideal for NEMA or IP-Rated Enclosures)	✓	✓	✓				✓
Space Constrained	✓	✓	✓		✓		✓
Fiber to the Desk	✓	✓	✓	✓	✓		
Utilities							
Casino (Fiber to the Slot)	✓	✓	✓				
Walker Ducts	✓	✓	✓				
Ticketing Area for Transit Authority			✓				
Department of Transportation			✓				
Ordering Information	EDGE8-SMH Wall-mountable, holds 1 EDGE8 module, black	EDGE-SMH Wall-mountable, holds 1 EDGE module, black	EDGE-SMH-SPLC Wall-mountable, holds 1 EDGE pigtailed splice cassette, black	WLL-PL-AA Single-gang wall-plate, 1 straight port WLL-PL-BG Double-gang wall-plate, 12 straight ports	WMO-85 Workstation multimedia outlet (WMO), beige WMO-35 WMO, white	1LAN-D600-SB1A-WH Surface-mount box for keystones, 1 port 1LAN-D600-SB2A-WH Surface-mount box for keystones, 2 ports	RBC-02P Bracket compatible with CCH panels and EDGE-CCHBKT-2

*Order keystone adapters separately. Consult [Secure Solutions Ordering Guide \(LAN-1852-AEN\)](#) for ordering information.

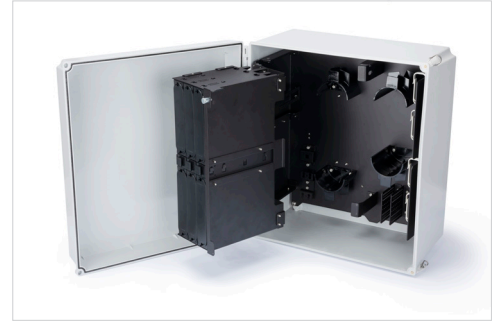
†2-port box: 4.5 x 2.63 x 1.19 in (11.43 x 6.68 x 3.02 cm) | 4-port box: 4.56 x 3.19 x 1.19 in (11.58 x 8.1 x 3.02 cm) | 6-port box: 6.56 x 3.19 x 1.19 in (16.51 x 8.1 x 3.02 cm)

Outdoor/Harsh Environment Enclosures

When you need an enclosure that can withstand the elements, Corning has you covered. These enclosures offer protection for delicate fiber optic connections and splices in indoor and outdoor environments and are ideally suited for industrial and manufacturing applications.

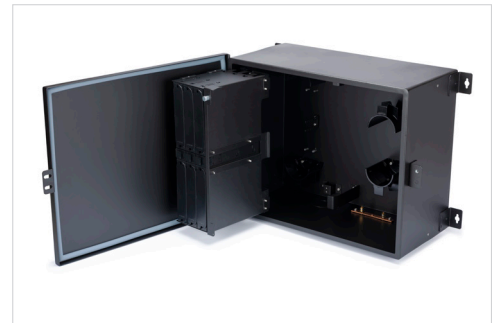
Environmental Distribution Center (EDC) Housing

- Accepts closet connector housing (CCH) panels and/or CCH cassettes
- Dimensions (H x W x D) – 16.34 x 14.35 x 6.24 in (41.9 x 36.8 x 16 cm)
- Composite construction offers outstanding chemical and temperature resistance
- IP66/NEMA 4X



Industrial Connector Housing (ICH)

- Accepts CCH and/or CCH cassettes
- Designed to accommodate conduit with concentric knockouts
- Dimensions (H x W x D) – 10.41 x 12.87 x 7.41 in (26.7 x 33 x 19 cm)
- Tough, baked-on powder-coated finish
- IP64/NEMA 3S



Fiber Count per Model

	EDC-CS-02P-NH (Max. 2 CCH Cassettes)	EDC-CS-06P-NH (Max. 6 CCH Cassettes)	ICH-CS-02P (Max. 2 CCH Cassettes)	ICH-CS-06P (Max. 6 CCH Cassettes)
LC	48	144	48	144
SC	24	72	24	72
ST®	24	72	24	72

Network Interface Device (NID)

- Weather-resistant enclosure that can hold active device, such as an optical network terminal (ONT)
- Dimensions (H x W x D) – 9.4 x 6.7 x 3.2 in (240 x 170 x 80 cm)
- Plastic construction
- IP43



A – Part Number: 80-6114-9787-8
 B – Active Device: 1LAN-SDAN-8293
 Surface Mount Cradle: 1LAN-SDAN-SMCRD

CORNING

Corning Optical Communications LLC • 4200 Corning Place • Charlotte, NC 28216 USA
 800-743-2675 • FAX: 828-325-5060 • International: +1-828-901-5000 • www.corning.com/opcomm

Corning Optical Communications reserves the right to improve, enhance, and modify the features and specifications of Corning Optical Communications products without prior notification. A complete listing of the trademarks of Corning Optical Communications is available at www.corning.com/opcomm/trademarks. All other trademarks are the properties of their respective owners. Corning Optical Communications is ISO 9001 certified. © 2020 Corning Optical Communications. All rights reserved. LAN-2503-AEN / May 2020